

HUNSTEAD WORLD

A 100-Year Regenerative Civilisation Blueprint for Europe



January 2026
www.hunstead.com

THE EUROPEAN CHALLENGE

Key inflection points amplifying urgency and market need.



1. Rural Depopulation

- Young people leave villages.
- 30% youth loss in rural regions.
- Land sits abandoned.
- Villages face decline.



2. Biodiversity Collapse

- Over-farmed & abandoned land.
- 75% farmland bird decline.
- Soil degradation.
- Habitat loss.



3. ESG Fatigue

- Corporations under pressure.
- €2 tn ESG spend pending.
- No clear pipeline.
- Risk of greenwashing.



4. Children's Disconnect

- Digital life severs nature tie.
- 60% of EU children digitally dominant.
- Loss of ecosystem understanding.
- Future skills gap.



Europe lacks a single, scalable model to address these simultaneous crises.

THE HUNSTEAD SOLUTION

A Unified Framework for Regenerative European Civilisation.



UNIFIED MODEL:

Integrated system of hamlets, hubs & routes



REGENERATIVE ECONOMICS:

100-Key shared ownership & Creative funding



100-YEAR GOVERNANCE:

Long-term trusts for land protection & stability



EU GREEN DEAL ALIGNMENT:

Ready-to-deploy, policy-proof asset class

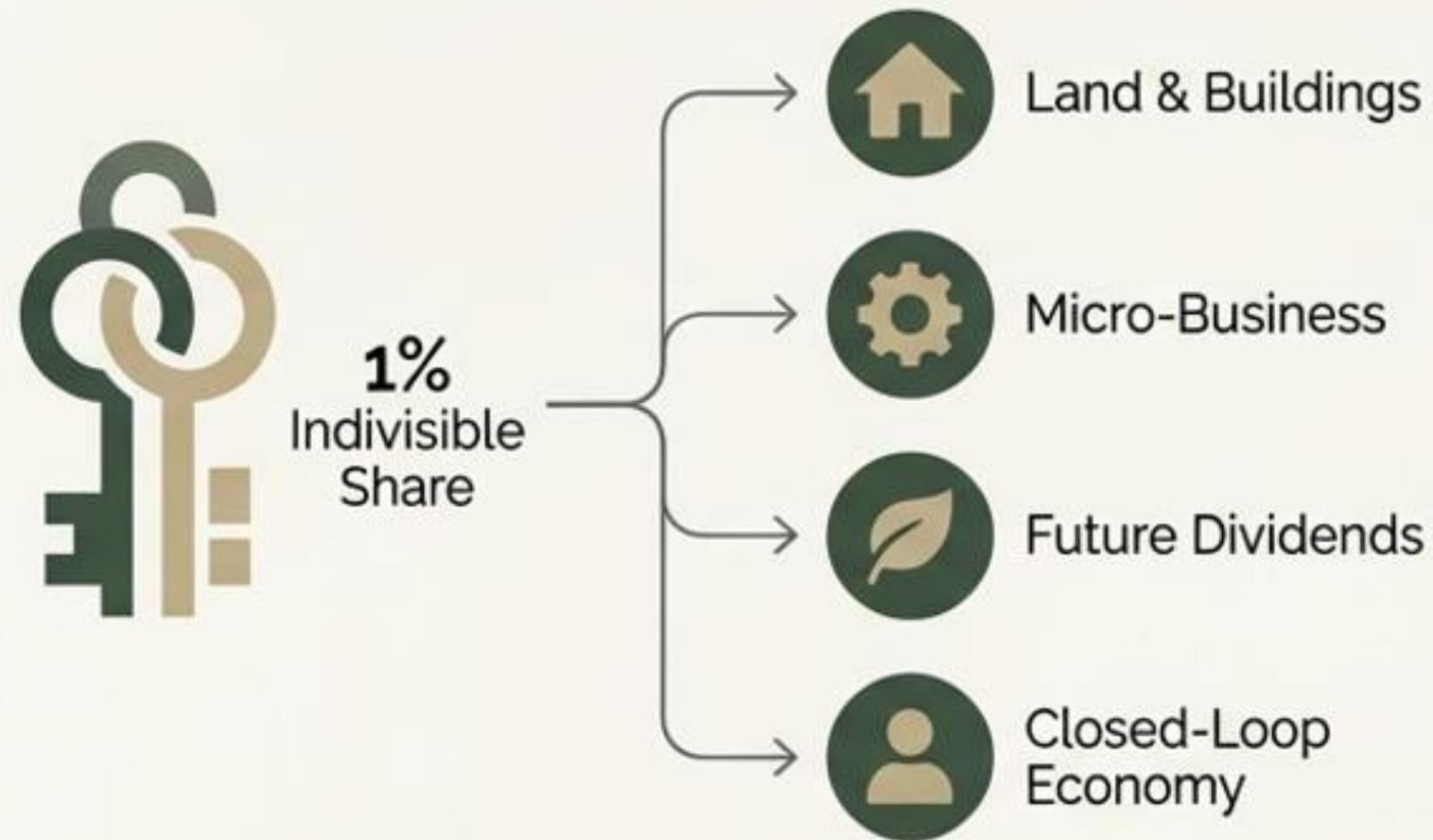


Moving beyond pilot projects to a scalable, investable reality.

100 Keys Ownership & 100-Year Trust Structure

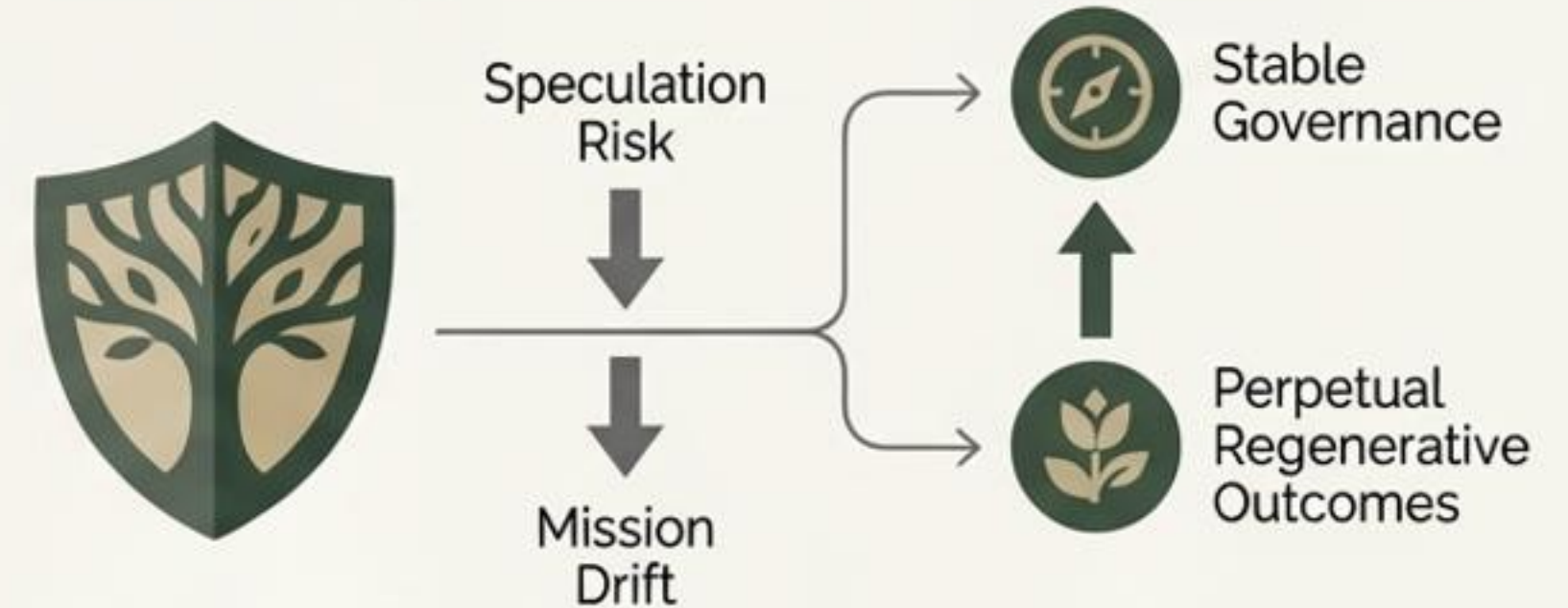
A Closed-Loop Economy & Perpetual Regenerative Governance

100 Keys Model



Keys represent 1% shares in physical assets, income, and long-term value. Tradeable exclusively within the Hunstead World network.

100-Year Trust Structure





The Legal Shield Against Speculation

Hungarian 100-year trust guarantees asset protection and mission fidelity, securing investor confidence by locking in long-term regenerative vision and preventing market speculation.

THE CREATIVE ENGINE: 100-UNIT CROWDFUNDED UPGRADES

Gamified innovation, rapid deployment, and continuous member engagement.

THE 100-UNIT MODEL

-  **Member-Proposed Ideas:** Tiny homes, solar arrays, story zones, greenhouses.
-  **Collaborative Funding:** Projects priced as 100 units for community investment.
-  **Transparent Capital Deployment:** Funds are released only upon full 100-unit sale.
-  **De-risked Development:** Ensures only loved, viable ideas get built.

THE INNOVATION PIPELINE



THE MUNKA SYSTEM: REGENERATIVE RURAL WORKFORCE

Reverse-Bidding Marketplace for Local Labour



**PROJECT
DEFINITION:**
Building,
Gardening,
Creative
Installations



REVERSE-BIDDING MECHANISM



LOCAL MUNKAS SET FAIR PRICES.
PRICE RISES UNTIL ACCEPTANCE.

ENSURES FAIR PAY & ORGANIC
MARKET BALANCING.



MEASURABLE IMPACT & EBITDA CONTRIBUTORS



+40% VILLAGE INCOME
UPLIFT



ANCHORS REGENERATION
SPEND LOCALLY



CIRCULAR RURAL ECONOMY



STRENGTHENS INVESTMENT
CASE AS EBITDA
CONTRIBUTORS

MICRO-BUSINESS ECONOMICS:

A Self-Sustaining, Scalable Enterprise Model



5 MONETISATION CHANNELS PER HUNSTEAD NODE



Accommodation Rentals: Premium stays in restored rural properties.



Food Production: Local organic produce & farm-to-table sales.



Creative Workshops: Educational programmes & skill-building sessions.



Regenerative Tourism: Guided experiences & eco-tours.



Branded Local Products: Artisan goods & Hunstead merchandise.

FINANCIAL TRAJECTORY: BREAK-EVEN WITHIN 24 MONTHS



INVESTOR ASSURANCE: NOT GRANT-DEPENDENT

Economically alive enterprises, designed for scalability and low operating risk. Each node generates reliable revenue, satisfying investor demand for cash-generative, long-term assets.



The Hamlet: The Showcase Layer

A cluster of 10–20 properties restored into a living, breathing regenerative village.



Prestige Sponsor Tier

The first 'prestige tier' offering for large corporate partners, ESG funds, high-net-worth individuals, and family offices.

Provides high-visibility branding, legacy association, and exclusive access for hosted events and corporate retreats.



Cultural & Social Hub

The social heart of Hunstead World, serving as a collaborative creative village, a premium regenerative tourism magnet, and a significant historical preservation victory.

A vibrant destination for community engagement and creative exchange.



Demonstrable ESG Impact

A measurable proof-of-concept ready for media and policy endorsement.

Elevates Hunstead from scattered nodes to a prestige destination, unlocking higher ticket sponsorships and demonstrating tangible returns on ESG investment.



The Hamlet: A tangible, measurable ecosystem showcase and cultural centre for the Hunstead World network.

HUNSTEAD HOUSE (ESG RETREAT)

Lakeside Manor: Corporate & Wellbeing Hub.



LEADERSHIP OFFSITES & WELLBEING WEEKS

26-bed premium facility. Designed for leadership development and digital detox.



SPONSOR ORIENTATION & ESG ENTRY POINT

Front door for corporate ESG budgets.
Orientation for new partners.



IMMEDIATE CASH-FLOW UPSIDE

Generating premium retreat revenue.
Scalable template across future nodes.



Bridging Regenerative Tourism with B2B Demand

CASTLE HUNSTEAD

The Flagship: Heritage, Luxury, & Regenerative Symbolism

SYMBOLIC & EMOTIONAL CENTRE



Architecturally Unique & Historically Meaningful



Environmentally Rich



Anchors the Entire Network



PREMIUM ESG CAPITAL & MEDIA DRAW



100 Keys: Highest-Tier Offering



Attracts Luxury ESG Capital



National Media & Narrative Centrepiece

HERITAGE PRESERVATION & FUTURE



Embodes Heritage Preservation & Regenerative Future



Iconic Asset for Long-Term Impact

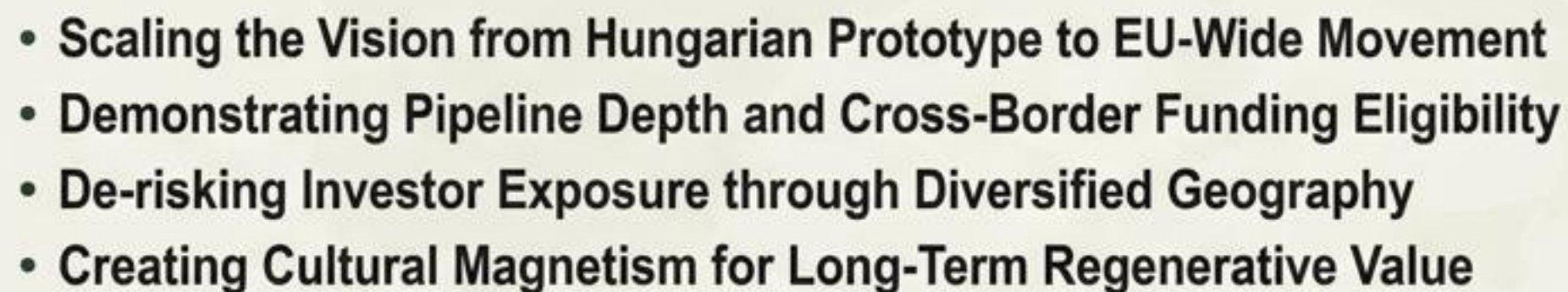
The Nomadic Walking Village

A Regenerative Pilgrimage
Route Around Lake Balaton

- ↔ 10-mile Hunstead nodes
- 🧳 Slow travel & micro-hospitality
- 💡 Story zones & creative experiences
- 📖 Land regeneration & education
- 🌐 Template for European expansion



Four Continental Routes: A Regenerative Camino Across Europe.



Schoolstead: The Educational Layer



Adopted Micro-Hunsteads

- Hands-on ecology lessons
- Regenerative gardens
- Emotional-intelligence training

EU Wellbeing & Policy Alignment

- Meets EU wellbeing mandates
- Supports nature education
- Integrated STEM learning

Sustainable Financial Model

- Converts education budgets to revenue
- New funding stream
- Widened stakeholder base (Ministries, CSR)

Long-Term Strategic Value

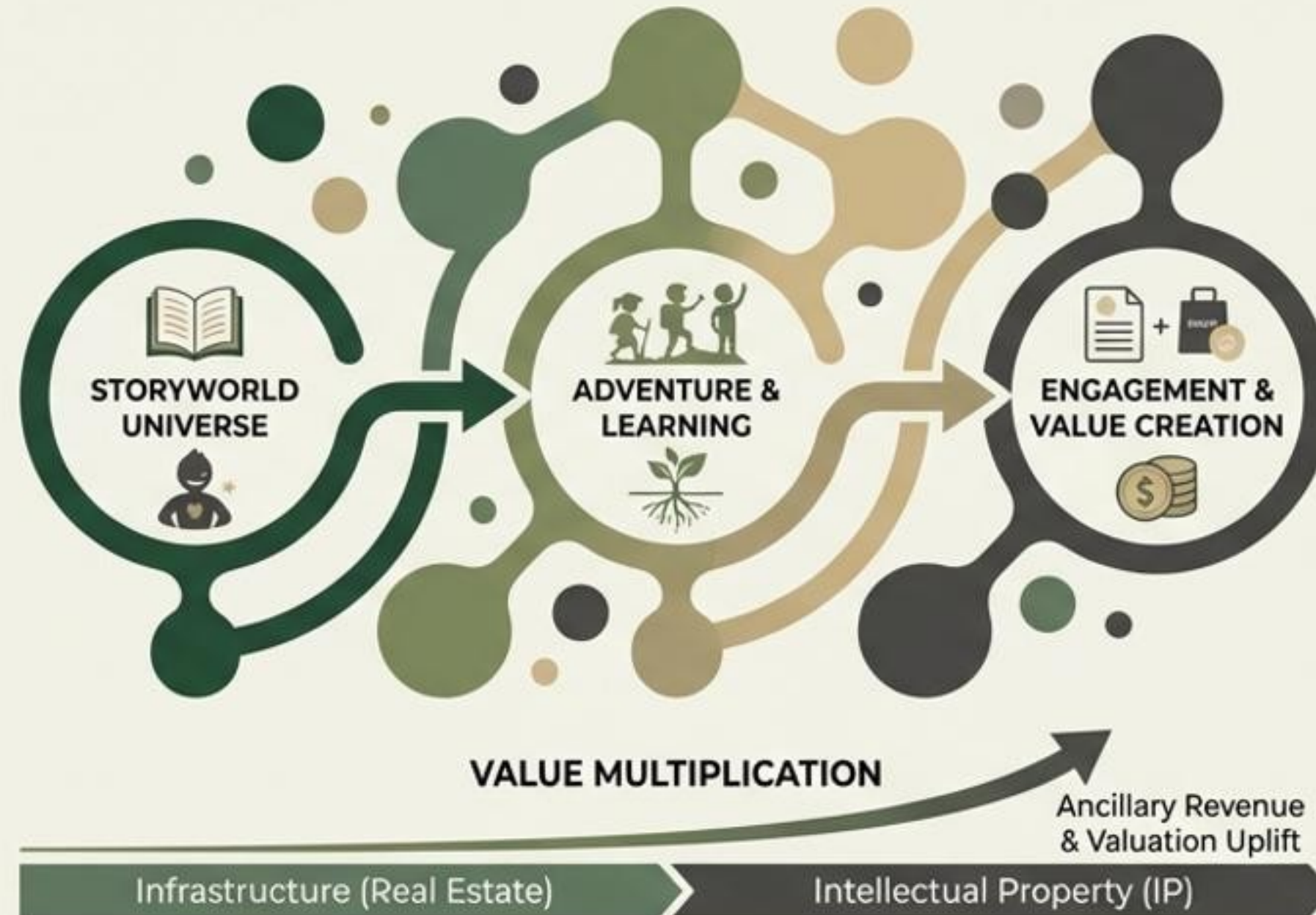
- Seeds future Key-holders
- Ensures cultural perpetuity
- Engages parents and community

Michael Rizal Storyworld

Narrative-Driven Learning for Ecological Literacy

Storyworld Engine

- 🌿 **Narrative as Curriculum:** Turns biodiversity into adventure. A unique soil-hero universe drives curriculum uptake.
- 🌿 **From Soil-Hero to IP:** Creates ancillary revenues and merchandising upside. Hunstead as infrastructure and intellectual property.




Value & Impact

- 🌿 **Emotional 'Stickiness' & Engagement:** Builds lasting connection for children, educators, and media partners.
- 🌿 **Multiplying Valuation Beyond Real Estate:** Unlocks new revenue streams and increases exit valuation.

ESG Alignment & EU Green Deal Fit

Transforming Compliance Burden into Revenue Opportunity

EU Regulatory Frameworks

-  CSRD Compliant
-  CSDDD Aligned
-  EU Taxonomy (Environmental Objectives)
-  Nature Restoration Law Compatible

Quantifiable Impact KPIs

-  **+30%** Soil Carbon Sequestration
-  **+50%** Biodiversity Score Improvement
-  **+40%** Rural Income Generation

The Business Case for CFOs

A Turnkey ESG Product. Audited Data Dashboards. Accelerated Sales Cycles. Premium Pricing Potential.

Governance & Transparency

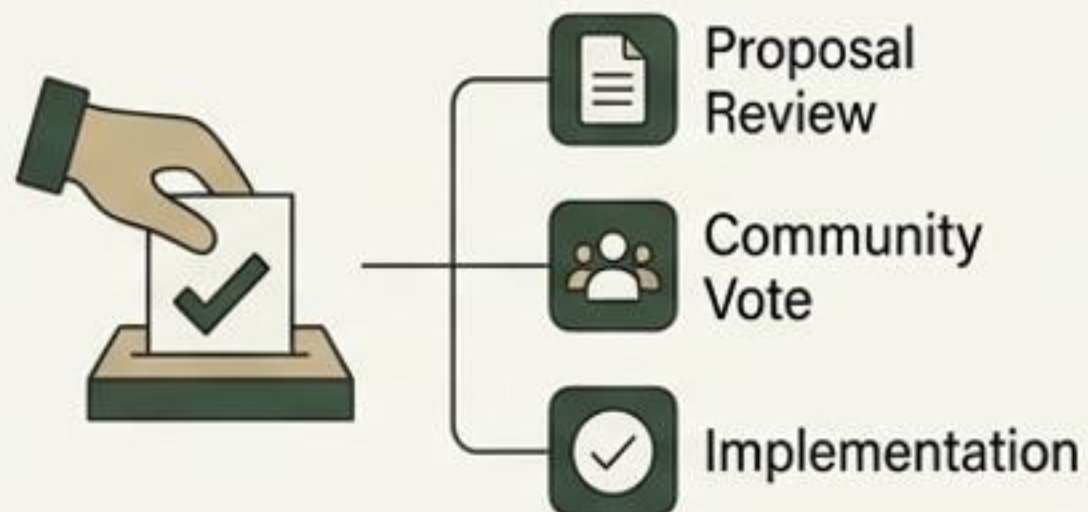
Ensuring Mission Integrity & Long-Term Stability

100-Year Hungarian Trust Structure



- Legal land and property protection
- Perpetual stewardship (anti-speculation)
- Professional trustee oversight
- Mission drift prevention

Member Voting & Decision-Making



- Shared governance rights via Keys
- Creative proposal review boards
- Transparent voting protocols
- Community-driven decisions

Regenerative Metrics & Reporting



- Public regenerative impact dashboards
- Transparent admin fee reporting
- Annual accountability reviews
- ESG impact verification

Converting soft impact into hard governance security through institutional-grade oversight and regenerative bylaws

Cultural & Social Impact: SROI & Rural Revival

Quantifiable Returns Beyond Economics

Community Cohesion & Pride



Restored Village Pride:
Strengthened Local Identity & Belonging



Intergenerational Cohesion:
Bridging the Gap Between Youth & Elders

Quantifiable Social Returns (SROI)



30%

Increase in Local Festivals & Cultural Events

50%

Youth Return Rate:
Reversing Rural Depopulation Trends

Impact Investor & EU Alignment



Satisfies Triple-Bottom-Line Mandates:
Social, Environmental, & Economic Value



Qualifies for EU Cultural & Regional Development Funds



Differentiates from Purely Tech or Agri-Only Models

Proving the tangible value of intangible returns through measurable Social Return on Investment frameworks, securing long-term capital for regenerative civilization.

The Founder's Role: Dave French

The Narrative Architect & Coherence Engineer



A Five-Year Journey:

- Walked the land, lived the concept, prototyped on Hunstead HQ, iterated without giving up.

The Visionary & Executor:

- Connected ecology, creativity, education, and ESG; merged imagination with rigorous execution.

Building Coherence:

- The architect of the unified system; built the blueprint Europe didn't know it needed.



CALL TO PARTICIPATION

Hunstead World: A Future Europe Can Be Proud Of



FOR SPONSORS & CORPORATES

Sponsor ESG Retreats & Showcases.
Align with EU Green Deal.
Host leadership offsites at Hunstead House.



FOR INVESTORS

Fund Key Acquisitions.
Secure 5–10% ROI.
Accelerate the regenerative property pipeline.



FOR EDUCATORS & SCHOOLS

Adopt Schoolsteads.
Integrate regenerative learning.
Utilize the Michael Rizal Storyworld.



FOR CITIZENS & WALKERS

Walk the Nomadic Village.
Experience slow travel.
Join the regenerative pilgrimage route.

JOIN THE MOVEMENT: Visit www.hunstead.com to explore partnership opportunities.

HUNSTEAD WORLD

A Future Europe Can Be Proud Of

Hunstead World is not an optional luxury, but the scalable, regenerative civilisation model Europe has been waiting for. This is a historic inflection point. Seize the early-mover advantage and join us in shaping a resilient, thriving future. Thriving future. The time to act is now.

January 2026
www.hunstead.com

Author
Dave French

